

Education and development opportunities

**MACMILLAN
CANCER SUPPORT**

Macmillan End of Life Care Professionals
2022 Prospectus Quarter 1 Edition

Contents

Welcome	3
Introduction	4
Who can access our offer?	6
Choosing the right level	12
What is the Macmillan Person Centred Care Competency Framework (MPCCCF)?	13
Communities of Practice (CoPs)	14
Six Learning & Development Themes	16
1. Cancer Information and Support	17
2. Communication Skills	31
3. Leadership and Professional Development (LPD)	37
4. Palliative and End of Life Care (PEoLC)	47
5. Personalised Care and Support Planning (PCSP)	54
6. Primary and Community Care (PCC)	59

Welcome

Thank you for visiting our Quarter 1 Edition of the 2022 Prospectus. I hope that you will find our learning and development offer interesting and exciting.

I recognise that 2021 has been a very difficult year for our Macmillan professionals and the wider cancer workforce, and we look forward to supporting you in continuing your amazing work for people living with cancer. 2021 brought us many challenges and opportunities and has transformed the way we work in Professional development and knowledge.

This year, we've replaced Learn Zone with an exciting new Learning and Communications Hub. The Hub will provide a forum for learning using many different formats, as well as providing a platform where you can network and share information with fellow professionals. Please ensure you sign up to take advantage of our new improved learning offer.

We are always looking to build on our learning offer to meet your requirements and to help you continue to grow. Please keep an eye out in your Mac Mail for updates on additional learning resources we may add throughout the year.



Lynne Coulson
**Head of Professional
Development and
Knowledge**
**Macmillan Cancer
Support**

About our Learning & Development offer

The Quarter 1 Edition of the 2022 Prospectus contains a varied programme of virtual modules, webinars, virtual classrooms, eLearning and eUpdates. We plan to add new content throughout the year and will let you know as it becomes available. Please have a look at the variety of opportunities designed to help you develop your skills and expand your knowledge so you can continue to provide the best support and care to people living with cancer.

We will also be working collaboratively with other cancer charities to give our learning offer a focus on specific cancer awareness months and weeks throughout the year – please see page 20 for more information.



As a health and social care professional, you will know that cancer can affect people in many ways - from impacting on health and relationships, right through to finances and work. The needs of people living with cancer are ever-changing and, as a result, so are the demands placed on you. Our 2022 offer is underpinned by Macmillan's Person Centred Care Competency Framework (MPCCCF) to ensure that we remain focussed on providing you with the education, training, tools, learning resources and development opportunities to help you to meet these needs and demands.



Who can access our offer?

Macmillan professionals

Learning and Development that has been designed specifically with the needs of our professionals in mind.

The wider cancer workforce, both paid and unpaid (volunteers)

This offer is open to anyone who wishes to access education to better support their interactions with people living with cancer, including our valued volunteers.



Jackie Fenemore
Macmillan Lung Nursing Team

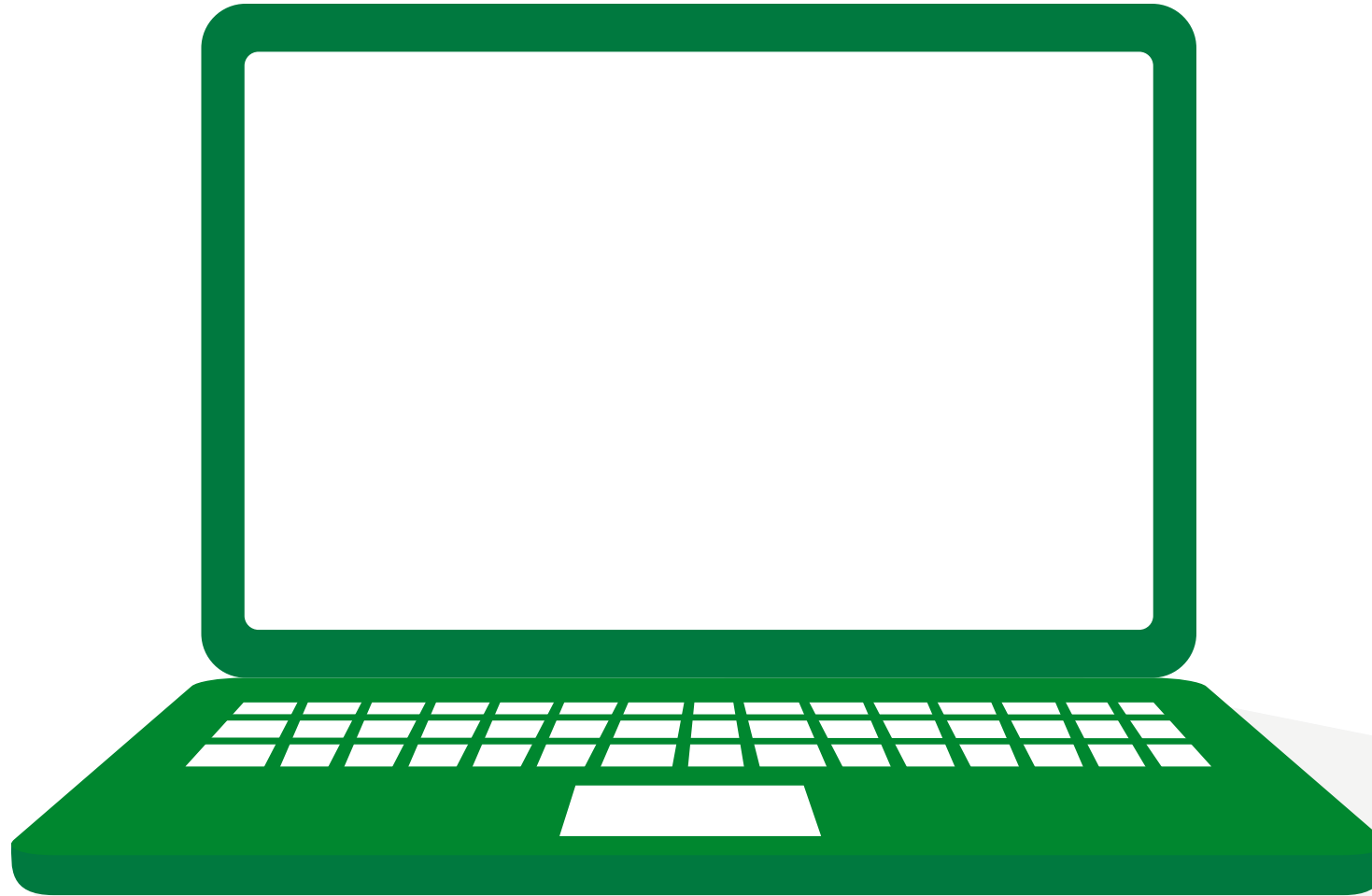


Accessing online learning - easy as 1-2-3

We offer a variety of eLearning modules in addition to webinars, virtual classrooms and blended learning opportunities. As these modules are online, you can complete them in your own time and in any location. In this prospectus you will find some of our most popular eLearning modules. On the next page you will find out how to sign up.

Accessing online learning - easy as 1-2-3

Watch a 1 min demo of the Hub on this
[Hub Demo video link](#)



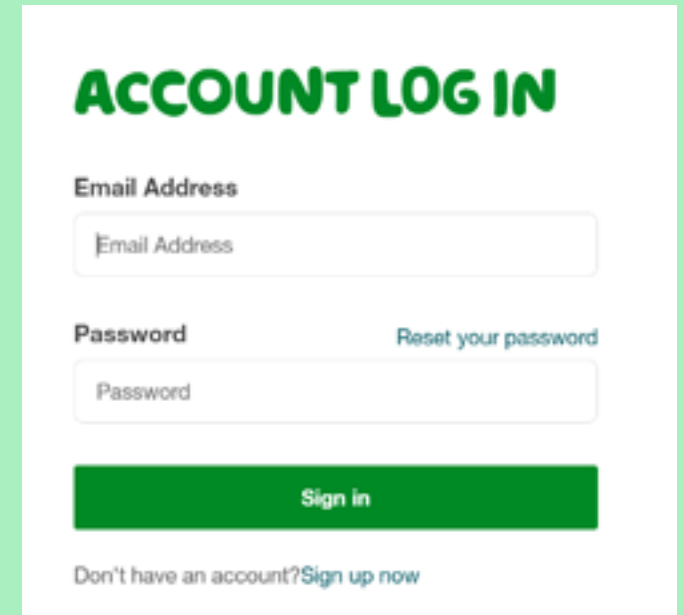
There are two ways to sign up depending on
your role. Select the route applicable to you.



Accessing online learning 1-2-3

To sign up to the Learning and Communications Hub, follow these steps:

1. Visit this [online page](#). It will take you to the sign up page for the Hub.
2. When you reach the "Account Log In" page, select the "Sign up now" link at the bottom of the screen.
3. This will take you to the Create an account page. Please enter the email address we have contacted you on and then select the "Send verification code" button.
4. You should receive an email with your verification code included. Enter this where prompted and select the "Verify" button.
5. You should then have the option to fill in your chosen password and your name.
6. Once you have done this, select the "Complete registration" button.
7. You should then receive a confirmation email.
8. If you then visit the "Account Log In" page again, you should be able to log in.



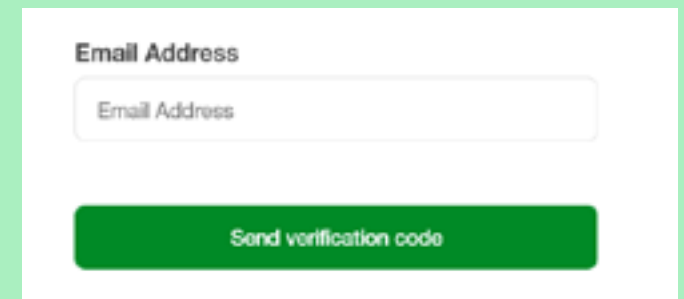
ACCOUNT LOG IN

Email Address

Password [Reset your password](#)

Sign in

[Don't have an account? Sign up now](#)



Email Address

Send verification code



Accessing online learning 1-2-3

To sign up to online learning, follow the below steps:

1. Select this [link](#) or visit Learning and development.
2. Click "*If you are a health and social care professional, complete this form to sign up today*".
3. We can then get your account set up on the Hub and will send you information on how to log in.
4. If you experience any issues with this process, please let us know at LearningSupportHub@macmillan.org.uk
5. We hope you enjoy the new Learning and Communications Hub!

» Healthcare professionals » Macmillan Professionals » Learning and development

LEARNING AND DEVELOPMENT

Our learning and communications hub offers free training and events for health and social care professionals working in cancer care. Sign up today.

On this page

- Get training and support for your role
- What you'll get as a Macmillan Professional
- Get in touch with us

Join our learning and communications hub

If you are a Macmillan Professional, [sign up to access the benefits](#).

If you are a health and social care professional, [complete this form to sign up today](#).

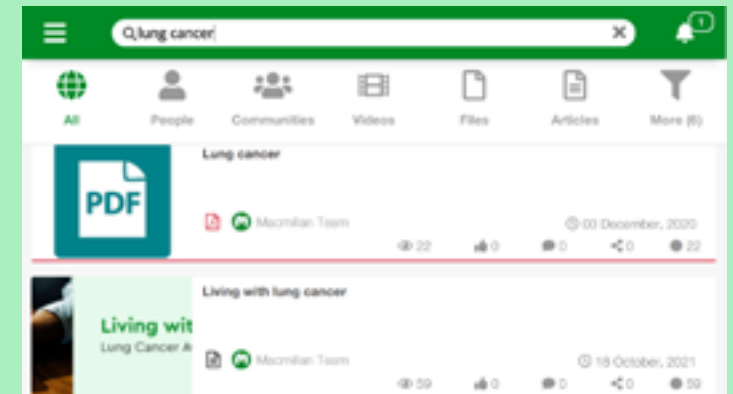
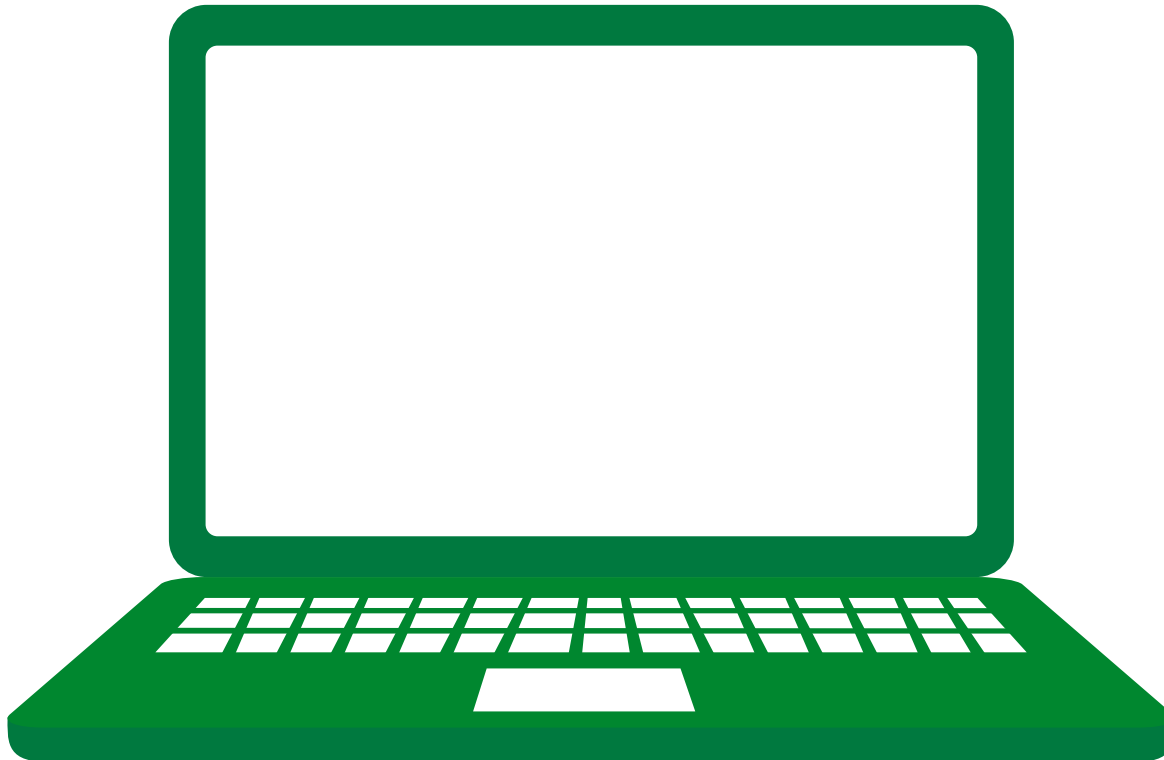
[Log in to the hub](#)



Accessing online learning 1-2-3

The hub contains a great selection of learning materials in different formats. Here you'll find videos, interviews with specialists, articles and eLearning modules. To find required learning materials, simply search for them using the search bar.

Watch a 30 second video explaining how to search for learning resources by visiting this demo: [How to search on the Hub](#).



Choosing the right level

The levels indicated throughout our learning offer are related to the Macmillan Person Centred Care Competency Framework (MPCCCF). These are:

Expert Level – Applies to certain roles or functions that require more clinical expertise with a greater depth of skills and knowledge.

Enhanced Level – This applies to certain roles or functions that require more clinical expertise and builds upon the essential level for those professionals wishing to further develop their existing skills and knowledge.

Essential Level – Covers core competencies, skills and knowledge identified in the MPCCCF as relevant for all the workforce.

All – There are some learning opportunities and learning resources that are applicable to all levels of the MPCCCF and suitable for everyone.



What is the Macmillan Person Centred Care Competency Framework (MPCCCF)?

- The MPCCCF has been developed to clarify the roles and competences, education and training required in the workforce to support services in meeting the needs of people living with cancer.
- This ambitious, forward-thinking framework cuts across traditional professional roles and titles and can be used in primary, secondary, tertiary and social care settings, enabling staff within these services to better meet the needs of People living with cancer .
- It is based on qualification levels, which will enable it to be used across the 4 nations of the UK. Please click on this [link](#) to access the MPCCCF Learning & Communications Hub (LCH) community, where you can find out more information and view the MPCCCF document.



Communities of Practice (CoPs)

2022 will see the introduction of four new multidisciplinary **Communities of Practice** (CoPs) looking at:

- Inequalities in Cancer Care
- Palliative Care and End of Life Care (PEoLC)
- Personalised Care and Support Planning (PCSP)
- Wellbeing CoP for professionals and the wider workforce

It is intended that these CoPs will be open to all individuals working at any level in cancer care who have an interest in the subject area. As the CoPs mature, it may be that subgroups develop to discuss specific aspects of the CoP area, such as Electronic Holistic Needs Assessment (HNA/eHNA).

More information can be found on the next page.



Alex Smith
Urology Team

Four Communities of Practice (CoPs)

Inequalities in
Cancer Care

Palliative and
End of Life Care
(PEoLC)

Personalised
Care and Support
Planning
(PCSP)

Wellbeing CoP
for professionals
and the wider
workforce

What are they?

CoP are self-sustaining groups of people who share an interest in an aspect of work aimed at improving the lives of people with cancer. Our aim is to cultivate and enable communities of practice to develop across the UK to spread innovation, ideas and good practice, enable sharing of experience and knowledge.

Building: upon known previously successful face to face Communities of Practice

Enabling: cancer professionals to share knowledge and learning

Bridging: the gap between informal interactions on the LCH and virtual classrooms

Linked: to wider events such as Best Practice Forums

Six Learning & Development Themes

We have divided the prospectus into six themes.

Each module or activity has a specific Macmillan Person Centred Care Competency Framework (MPCCCF) education level (essential, enhanced or expert), so you can quickly find the opportunities that are most suitable for you.

Cancer Information and Support



Sharon Manning
Macmillan Gynaecology
Clinical Nurse Specialist

Cancer Information and Support

The first theme of Cancer Information and Support captures the need for Continuous Professional Development (CPD) in respect of emerging cancer treatments and therapies, as well as how we can support each other and ourselves in such a rapidly changing environment.

There will be new content uploaded to the Learning and Communications Hub as the year progresses, the details are on the next page.



Alison Wyatt
Macmillan Specialist

Learning resources for quarter 2

Cancer Information and Support

Cancer Information

- Introduction to genomics and personalised medicine (eLearning)

Supporting Ourselves

- Psycho-education for the cancer workforce (eLearning)
- Help the Helpers (Vicarious trauma) (eLearning)
- Finding Peace In A Frantic World (Mindfulness) (VC)
- Help with setting up Online Group Reflective Practice with your teams/networks

Cancer calendar information

Macmillan will be working throughout 2022 with other site-specific cancer charities to develop new and innovative content to be launched on the Learning and Communications Hub to coincide with cancer awareness campaigns. The learning resources launched will also link to relevant Professional development and knowledge webinars, modules and eLearning.

Jan	Feb	Mar
<ul style="list-style-type: none"> • Cervical screening awareness month 	<ul style="list-style-type: none"> • Feb 4 World cancer day • Oesophageal cancer 	<ul style="list-style-type: none"> • Brain tumour awareness week • Prostate cancer • Ovarian cancer
Apr	May	Jun
<ul style="list-style-type: none"> • Colorectal cancer • Testicular cancer 	<ul style="list-style-type: none"> • Dying Matters Week • Bladder cancer • Skin cancer 	<ul style="list-style-type: none"> • Myeloma week
Jul	Aug	Sept
<ul style="list-style-type: none"> • Sarcoma 		<ul style="list-style-type: none"> • Blood cancer • Urological cancer • Thyroid cancer
Oct	Nov	Dec
<ul style="list-style-type: none"> • Breast cancer 	<ul style="list-style-type: none"> • Lung cancer • Pancreatic cancer 	<ul style="list-style-type: none"> • Grief Awareness Week

For more information on our cancer calendar information, please search in the Hub for the relevant topic.

Acute Oncology Explore

Level

Essential

Delivery

Virtual classroom

Description:

This session will explore what is meant by the term 'Acute Oncology', identify the acute symptoms that patients may experience as a result of their cancer or its treatment, outline common emergencies in cancer care and offer strategies so that health care professionals can recognise potential emergency symptoms and take appropriate action.

Dates

24 March 2022

9.30am–1.30pm

Further dates to be released later in the year

Introduction to Cancer Awareness

Level
Essential

Delivery
eLearning

Description:

This eLearning module is aimed at those who are new to supporting people living with cancer, but would be equally useful to clinical and non-clinical professionals looking to refresh and update their knowledge.

The module aims to raise awareness of the nature of cancer, cancer prevention and early detection, staging and investigations & cancer staging and treatment options. It also looks at the impact cancer has on the patient and their significant others.

Follow this [link](#) to access the module:



Neil Bibby
Macmillan Professional

Understanding Cancer and Its Treatments (CAIT 1 & 2)

Level
Essential

Delivery
eLearning

Description:

This virtual classroom is for anyone involved in providing information and support for people living with cancer in a clinical, non-clinical or social care role.

This course is split into 2 sessions and is particularly aimed at those who are new to supporting people living with cancer to raise awareness of cancer and its treatments and the impact it has on the patient and their significant others.

Dates		
CAIT 1	25 January	9.30am-1.30pm
CAIT 1	31 March	9.30am-1.30pm
CAIT 2	27 January	9.30am-1.30pm
CAIT 2	1 April	9.30am-1.30pm

Finding Peace in a Frantic World (Mindfulness)

Level

All

Delivery

Virtual classroom

Description:

In this session you will cover the following:

- Formal and informal mindfulness meditation practices, which involve using the breath and body as a focus for being aware of our present moment experience.
- Exploring the physiology of stress and how to self-regulate our moods, so we are more able to 'take a breath' when challenging situations arise and respond effectively.
- Recognising the patterns of worrying and self-criticism that often make us feel worse, and how we can relate to ourselves in a kinder way.

Dates

27 January 2022	8.30–10.00am
3 February 2022	8.30–10.00am
10 February 2022	8.30–10.00am
17 February 2022	8.30–10.00am
24 February 2022	8.30–10.00am
3 February 2022	8.30–10.00am

**Supported
self-management
Helping
Overcoming
Problems
Effectively
(HOPE)**

Hope:

Helping Overcome Problems Effectively (HOPE) is a facilitated self management programme for people living with cancer. Macmillan helps healthcare organisations to directly deliver the HOPE programme to people living with cancer by

- Providing an information session to those organisations and staff interested in finding out more about HOPE.
- Supporting the organisation to set up a HOPE programme.
- By training their staff to be HOPE facilitators and assessors.
- By providing regular updates and advice to staff.

The HOPE programme is delivered by healthcare professionals and volunteers across different time scales ranging from a six week programme (a two hour session every week) to a half day programme. The course is based on positive psychology, mindfulness and cognitive behavioural therapy.

The Macmillan Professional Development and Knowledge team also provide a HOPE programme directly to people living with cancer which is called iHOPE.

HOPE Information

Description:

Macmillan professionals, wider cancer workforce and volunteers.

An overview of the HOPE programme to enable participants to explore whether HOPE may be suitable for the people living with cancer in their organisation/community and how they may establish the HOPE programme in their organisation.

Dates

18 January 2022 virtual classroom	1.30pm
-----------------------------------	--------

Further dates to be released later in the year

HOPE Facilitator

Description:

Macmillan professionals, wider cancer workforce and volunteers looking to facilitate HOPE programmes in their local area.

The HOPE Facilitator training programme consists of three sessions of 2 hours and the three dates.

Dates - Programme 1

7 February 2022	1.30pm
14 February 2022	1.30pm
21 February 2022	1.30pm

Dates - Programme 2

8 March 2022	9.30am
15 February 2022	9.30am
22 February 2022	9.30am

Further dates to be released later in the year

HOPE Assessor

Description:

Macmillan professionals, wider cancer workforce and volunteers who are already trained HOPE facilitators.

This session will go through the assessment process for facilitators. Once they have attended this session delegates will be able to assess other HOPE facilitators in their local area.

Dates

15 March 2022

1.30pm

Further dates to be released later in the year

Description:

For people living with cancer; iHOPE is an online self-management programme which empowers people living with cancer to manage their health and wellbeing. The course is based on positive psychology, mindfulness and cognitive behavioural therapy.

Macmillan Information and Support Services will hold information about forthcoming dates.

Dates

Available from 18th January 2022

More information on future dates is available in the hub

Future programmes planned for the Q2 Prospectus include:

Introduction to Radiotherapy (eLearning)

Introduction to Genomics (eLearning)

Introduction to Emotional Health & Wellbeing (eLearning)

Improving Care for LGBTQ+ People living with cancer (webinar series)

LGBTQ+ Sexuality and Gender Awareness in Cancer Care (virtual classroom)

Vicarious Trauma: Help for the Helpers (eLearning)

Psycho-Education for the Cancer Workforce (eLearning)

Community of Practice – Wellbeing CoP for Professionals and the Wider Workforce

Community of Practice – Inequalities in Cancer Care

Communication Skills



Communication Skills

Effective communication can have a positive impact on the health and wellbeing of people living with cancer, and by helping them to better understand their situation, can help support their self management and decision making.

As professionals we can find ourselves tested by conversations when we least expect it. At Macmillan, we are offering a range of communication skills courses to support your ongoing development that underpins all aspects of The Macmillan Person Centred Care Competency Framework (MPCCCF).

We encourage you to revisit and refresh your communication skills regularly, regardless of your level of expertise.



Sarah
CISS Health Hospital

Introduction to Motivational Interviewing

Level

Essential

Delivery

eLearning

Description:

This eLearning resource provides an overview of Motivational Interviewing (MI) and explains how MI can be used to have supportive and non-judgemental conversations with people about change. It can provide a useful basis from which to support people to better self-manage their condition.

This essential level eLearning will introduce techniques and strategies, giving a framework from which to develop skills and knowledge further when supporting people living with cancer who are experiencing difficulties, especially around making lifestyle changes.

Dates

Available from 14 March 2022

Introduction to Listening and Responding

Level

Essential

Delivery

eLearning

Communication Skills

Description:

This eLearning module is designed to provide an opportunity to learn new skills or to reflect and build on your existing skills as a communicator. It also highlights the importance of active listening when supporting people living with cancer.

Dates

Available 21 March 2022

Communication Skills

Sage & Thyme

Level

Essential

Delivery

Virtual classroom

Description:

This workshop teaches the communication skills needed to notice distress, listen carefully and respond helpfully. It is interactive in nature and is delivered with a mixture of films, presentations and group work (including discussion).

Dates

17 February 2022	9.30am
------------------	--------

16 March 2022	1.30pm
---------------	--------

Further dates to be released later in the year

Communication Skills

Future programmes planned for the Q2 Prospectus include:

Emotive Conversations in Health and Social Care (blended) (enhanced)

Developing Motivational Interviewing (blended) (enhanced)

Courageous Conversations in Health Care (blended) (expert)

Dates - Emotive Conversations in Health and Social Care

12 May and 14 June

Times to be confirmed

Dates - Developing Motivational Interviewing

May and June

Times to be confirmed

Dates - Courageous Conversations in Health Care

June

Times to be confirmed



Leadership and Professional Development

Suki K
Macmillan Professional

Leadership and Professional Development

We use leadership skills in many aspects of our working life without always realising it. Leading teams, projects, caseloads or change may be obvious but influencing and negotiating, developing personal impact, and coaching others are often also a necessary part of our role as we work with people living with cancer.

Change is becoming a constant in this busy world and we may all have numerous concurrent changes happening, either organisationally or personally. For some of us change can be difficult to navigate or lead others through.

Whether you are going through change, managing projects well or fine-tuning how you lead your team, our leadership and change learning offers courses that will provide you with the skills, knowledge and confidence you need to succeed.



Induction for New Macmillan Professionals

Level

All

Delivery

Blended

Leadership and Professional Development

Description:

This is a short eLearning resource for all new Macmillan professionals, designed to provide an overview of Macmillan, our values, our purpose and how we work to improve the lives of people living with cancer.

It is the start of your welcome to Macmillan and will be complemented by a Microsoft Teams meeting/telephone call from your local Partnership Quality Lead (PQL) who will be able to answer any questions you may have about Macmillan and your new role. We want you to be the best you can be for the people you support.

Dates

Available in Q2

Leadership and Professional Development

EXPLORE

Level
Enhanced

Delivery
eLearning

Description:

Macmillan EXPLORE is a programme for professionals who wish to develop their career in cancer and enhance their professional skills and confidence when working with people living with cancer.

This is a free blended training programme that incorporates eLearning and self-directed study with mentor support, with the option of attending facilitated virtual sessions to enhance and consolidate learning.



Essential ExPlore

Enhanced ExPlore

ExPlore for Primary Care

There are three versions of the ExPLORE programme –

Essential ExPLORE (formerly ExPLORE4) is for professionals wanting to develop their knowledge and understanding of cancer and the impact upon patients and families. Aimed at the unregistered workforce, such as Health Care Assistants, Support Workers, Cancer Navigators and Volunteers.

Enhanced ExPLORE (formerly ExPLORE) is for professionals wanting to develop their career into cancer-specific roles. Aimed at Nurses, Allied Health Professionals, Social Care Practitioners, Pharmacists, and Assistant Practitioners.

ExPLORE for Primary care is for Professionals working in a Primary Care setting. Please see [page 59](#) for more information.

The ExPLORE programme will enable you to develop:

- Increased knowledge of the cancer pathway including early detection, treatment and its consequences, and palliative and end of life care.
- Understanding of Macmillan's services for professionals, patients, families and carers.
- Supporting self management when working with people living with cancer.
- Increased knowledge of key cancer specialist roles.

Dates

Available from 21 February 2022

Introduction to Project Management

Level
Essential

Delivery
eLearning

Leadership and Professional Development

Description:

This eLearning module will take you through the project management life cycle and provide you with insights into different approaches to managing projects successfully.

This project management eLearning will explore the skills, knowledge and techniques required to successfully complete a project. It will consider:

- Project initiation
- Project planning
- Implementation
- Completion

It will consider a variety of useful project-planning tools including risk analysis and management. It will consider the role of a project manager and the project team.

Dates

Available from 7 March 2022

Introduction to Coaching Skills

Level

Essential

Delivery

Virtual classroom

Description:

This virtual classroom session is appropriate for anyone who would like to find out more about coaching, what it is and why it is a useful skill to develop for use in the workplace.

Consisting of a practical and interactive session looking at some of the foundations of coaching, and introducing some tools and techniques to use in your practice either with patients or colleagues.

This session:

- Considers what coaching is (and perhaps isn't)
- Outlines the underlying skills of coaching
- Introduces you to using some coaching models and techniques
- Identify how you can apply coaching skills in your practice

NOTE: After June 2022 this will be migrated to the LCH as an eLearning resource.

Dates

15 February 2022

9.30am–1.00pm

23 March 2022

1.30pm–5.00pm

Further dates will be released for Q2

Introduction to the Macmillan Person Centred Care Competency Framework (MPCCCF)

Delivery

Learn and share sessions

Description:

To introduce the MPCCCF, exploring ways in which it can be used to develop services, teams and individuals. Participants will be encouraged to apply the approach and principles in their roles and services.

To access the MPCCCF LCH community, click the [link](#), where you can book on to one of the virtual information and discussion sessions.



Evidencing Work-Based Learning

Delivery
Blended

Leadership and Professional Development

Description:

Macmillan's work-based learning module offers a fantastic opportunity for 24 Macmillan professionals (and four honorary places for non-Macmillan professionals) to undertake a fully funded 30-credit academic module at Degree or Masters level in collaboration with the University of West England.

The key focus of the EWBL module is a work-based project. You will need to undertake a cancer service improvement project at work. The module consists of a short orientation session (1.5 hrs), five study days and a virtual showcase.

There are only 28 funded places on this module – further information can be obtained by contacting ServiceOpsSupport@macmillan.org.uk



Ria Delahunty James
Macmillan Professional

Future programmes planned for the Q2 Prospectus include:

Introduction to Coaching Skills (eLearning) (essential)

Developing your Coaching Skills (blended) (enhanced)

Leading and Managing Change (blended) (enhanced)

Developing your Project Management Skills (blended) (enhanced)

Palliative and End of life Care



Palliative and End of life Care

People with life-limiting conditions, such as cancer, should have early access to palliative and end of life care services regardless of their gender, age, social status or location. In order to achieve this goal, professionals and volunteers require ongoing support and training to have the confidence and skills to provide effective palliative care.

In the United Kingdom, more than a half a million people die each year, and many have a prognosis of less than 12 months. A person who is offered and engages in Advance Care Planning (ACP) is more likely to die in their place of choosing. They are also less likely to have emergency hospital admissions in the final months of their life, and more likely to have their wishes fulfilled.



Introduction to Palliative and End of life Care

Level
Essential

Delivery
eLearning

Description:

This course has been developed for professionals who provide generalist palliative care and support to people and their loved ones. You may be new to this area of care or wish to increase your awareness and understanding of this topic.

The resource has four sections that cover:

- What is palliative care?
- Care planning
- Pain and symptom management
- Care for the dying

Follow this [link](#) to access the module.



Palliative and End of life Care Webinars

Delivery
Virtual

Description:

The webinars will be recorded so they can be viewed later if it was not possible to attend the live event.

Dates

30th March

12.00pm-1.00pm



Communities of Practice are groups of active practitioners in a specific field who share ideas, experiences and best practice and support each other. They build a shared agenda learning from each other

CoP are self-sustaining groups of people who share an interest in an aspect of work aimed at improving the lives of people with cancer. Our aim is to cultivate and enable communities of practice to develop across the UK to spread innovation, ideas and good practice, enable sharing of experience and knowledge.

Building: upon known previously successful F2F Communities of Practice

Enabling: cancer professionals to share knowledge and learning

Bridging: the gap between informal interactions on the LCH and virtual classrooms

Linked: to wider events such as Best Practice Forums

Dates

26 April 2022

Introduction to Loss, Grief and Bereavement

Level

Essential

Delivery

Virtual classroom

Description:

This virtual classroom introduces you to loss, grief and bereavement, and helps you gain a deeper understanding of the wide range of losses and grief experienced by people living with cancer. Designed to help you feel more confident in using your skills to deal appropriately with individual situations, it includes the following areas of learning;

- Emotions associated with Loss, Grief and Bereavement
- Common bereavement theories
- Identification of your own beliefs and experience of loss and how this may help you when supporting others
- Helpful communication styles when offering support for people who are bereaved
- The importance of looking after yourself, including professional boundaries

Dates

14 March 2022

1.30pm

Future programmes planned for the Q2 Prospectus include:

Introduction to Loss Grief and Bereavement (eLearning)

Advance/Anticipatory Care Planning (eLearning)

Personalised Care and Support Planning



Personalised Care and Support Planning

It is estimated that around 3 million people are affected by cancer in the UK, and it is expected that soon cancer will affect one in two of the population. Thanks to advances in diagnosis and treatment, a large proportion of people diagnosed with cancer will survive. But this means many are living with cancer as a long-term condition.

This section includes modules designed to improve your knowledge and understanding around personalised care and support planning to help you provide the very best personalised care and support for people living with cancer.

These modules are relevant to you if you are working in any role providing direct clinical or other support services to people living with cancer. Whether you are a health professional, support worker, cancer information professional or supporting people with cancer in another way, you will want to be able to demonstrate an understanding of these core topics.



Katie Yockney
Macmillan Professional

Introduction to Personalised Care and Support Planning (PCSP)

Level

Essential

Delivery

Virtual classroom

This virtual classroom will provide opportunities to learn, share and network with others. Interactive activities are used to bring the subject to life, and we hope by the end of this session that delegates are able to:

- Understand strategic drivers regarding personalised care and support for people living with cancer.
- Understand the key components of personalised care, including holistic needs assessment, care planning, treatment summaries, cancer care reviews and health and wellbeing information and support.
- Explore a range of approaches and strategies to promote effective implementation of personalised care and support planning.

Dates

22 February 2022

1.30pm–5.00pm

What are they?

CoP are self-sustaining groups of people who share an interest in an aspect of work aimed at improving the lives of people with cancer. Our aim is to cultivate and enable communities of practice to develop across the UK to spread innovation, ideas and good practice, enable sharing of experience and knowledge.

Building: upon known previously successful F2F Communities of Practice

Enabling: cancer professionals to share knowledge and learning

Bridging: the gap between informal interactions on the LCH and virtual classrooms

Linked: to wider events such as Best Practice Forums

Personalised Care and Support Planning

A Digital Knowledge and Support Community on the LCH will be available from Q2. This new platform will be the digital portal for all things eHNA and will be complemented by a discussion forum.

Future programmes planned for the Q2 Prospectus include:

PCSP 'What matters to me?' (eLearning) available from 4 April 2022



Primary and Community Care



Primary and Community Care

Primary and community care professionals provide valuable care in or close to people's homes and their expert skills and knowledge enables them to support people to manage their long term conditions and maximise their independence. Cancer is increasingly recognised as a long term condition and in this section you will find a range of resources to support you



Practice Nurse Programme

Delivery
Blended

**Primary and
Community Care**

Who is it for?

Practice Nurses in Primary Care.

Description:

This programme will enable you to:

- Develop an understanding of cancer and its treatments
- Take a more active role in managing cancer as a long-term condition
- Act as a resource of cancer knowledge for colleagues in the practice setting by providing holistic support to people living with cancer
- Consider and begin to plan ways in which you can improve and enhance services within your own workplace for people living with cancer

Time requirement: 20-25 hours in total to be completed over a 5-month period.

Dates - Cohort 1

27 January 2022

10 March 2022

Dates - Cohort 2

22 March 2022

EXPLORE for Primary Care

Level
Enhanced

Delivery
eLearning

Primary and Community Care

Macmillan ExPLORE is a programme for professionals who wish to develop their career in cancer and enhance their professional skills and confidence when working with people living with cancer.

This is a free blended training programme that incorporates eLearning and self-directed study with mentor support, with the option of attending facilitated virtual sessions to enhance and consolidate learning.

This is a blended training programme that incorporates eLearning and self-directed study with mentor support, with the option of attending facilitated virtual sessions to enhance and consolidate learning.

EXPLORE for primary care will enable you to have an:

- Increased knowledge of the cancer pathway, including early detection, treatment and its consequences, and palliative and end of life care
- Understanding of Macmillan's services for professionals, patients, families and carers
- Self-management when working with people living with cancer
- Increased knowledge of key cancer specialist roles

Dates

Available from 21 February 2022

Courageous Conversations in Primary and Community Care

Level

Expert

Delivery

Blended

Description:

Professionals who are having challenging conversations with people about cancer and other life-limiting illness and wish to improve and update their skills.

Empowering people to talk about what matters to them is a vital skill, especially relating to discussions around end of life and dying. As primary and community professionals, we need the skills and confidence to have these conversations, sometimes in difficult situations and without all the information we would ideally like to have.

This course will provide you with the opportunity to:

- Refresh your skills through self-directed study within the LCH prior to attending this workshop
- Practice sharing sad, bad or difficult news in a safe and supportive environment
- Provide and receive feedback from your peers
- Reflect on this feedback to improve your practice
- Refresh your skills through self directed study within the LCH prior to attending this workshop

Primary and Community Care

Eligibility requirements:

Completion of enhanced level communication skills training such as emotive conversations (previously Managing Difficult Conversations or Challenging Conversations Using Technology) or similar.

Dates

15 March 2022

Further dates to be released later in the year



Cancer Care Reviews

Level
Enhanced

Delivery
eLearning

**Primary and
Community Care**

Description:

This eLearning module is designed to provide you with the knowledge to support you to complete a cancer care review which reflects what matters most to individuals affected by cancer.

Follow this [link](#) to access the module:

Dates

Available from 7 March 2022



Macmillan Cancer Support Line
Healthcare Professional

Essential Understanding your role in PCSP as a social prescriber/ Link worker (eLearning)

Primary and Community Care

Social prescribers or Link workers already have the skills to support people living with cancer. They play a huge role in improving the experiences of individuals. Focussing on 'what matters to me', they take a holistic approach and link people with non-clinical sources of support and well-being.

Two new eLearning modules will introduce you to how social prescribers can play a huge role in improving the experiences of with people living with cancer, highlighting that many of the issues they face are similar to other Long Term Conditions. The modules will explore:

Module 1: Understanding the needs of people living with cancer.

Module 2: Practical steps you can take in providing support to people living with cancer.

Dates

Available from 21 March 2022



Alex Smith
Urology Team

Future programmes planned for the Q2 Prospectus include:

Understanding Your Role in PCSP for Community Pharmacists Cancer Care Reviews (eLearning)

Coding and Safety Netting in the Context of Cancer Need (LCH)

macmillan.org.uk

Macmillan Cancer Support, registered charity in England and Wales (261017), Scotland (SC039907) and the Isle of Man (604). Also operating in Northern Ireland. MAC18954.

MACMILLAN
CANCER SUPPORT