



Thames Valley Cancer Alliance

Issue 108: 6 March 2025

Past editions are available on the [TVCA website here](#)

Content:

- [National news](#)
- [Alliance updates](#)
- [Training and events](#)
- [Patient facing resources](#)

National news

Smokefree hospital sites update



The **Tobacco and Vapes Bill** will allow the government to ban smoking in hospital grounds and other outdoor public spaces.

However, it's unclear which areas will also be vape free. **ASH** has advised [exemptions](#) where vaping supports smoking cessation, including in healthcare settings.

A consultation and further legislation are needed before any changes take effect, so a smoking ban in hospital grounds is unlikely before late 2026.

Feedback from the recent Innovation in the Early Diagnosis of Cancer Event in February

The Innovation in the Early Diagnosis of Cancer event on 12 February 2025 brought together 130+ experts to showcase NHS Cancer Programme-funded projects.

With £25m+ invested in 14 innovations across 369 sites, benefiting 160,000+ patients, the event gathered insights to shape future priorities.

[Information on the event is here.](#)

Multi-Cancer Case Finding Opportunities

The National Cancer Case Finding Programme is leading innovative early cancer detection through direct-referral pilots with 111 online. They are expanding the breast cancer pilot and developing pathways for haematuria and lung cancers, and are looking for more areas to join in.

If you're interested in a self-referral pilot based on NG12 guidelines, join us for an overview of the Somerset Breast Pilot at the National Cancer Alliances Share & Learn on 24 March 2025.

For more details email Marie Ahern: m.ahern@nhs.net

Living With and Beyond Cancer

The **Living With and Beyond Cancer** team has reinstated their popular bimonthly newsletter, offering updates and resources on personalised care, stratified follow-up, quality of life, psychosocial support, prehabilitation, and physical activity.

To subscribe, email Lesley.smith45@nhs.net

Cancer Alliances are invited to submit items for inclusion, including study days, project resources, evaluation results, case studies, and success stories. The next copy deadline is **11 April 2025**.

NHS England Breast Screening Campaign Update

Following the successful launch of the **NHS breast screening campaign**, media coverage continues, with notable segments such as the national broadcast on *This Morning* featuring interviews with our case studies, Philomena and Liz, and Vanessa Feltz undergoing a live breast screen.

While it's early to assess the full impact on screening uptake, early signs are promising. Google Trends shows the highest volume of searches for 'Breast

screening' in England in the last five years, and visits to the NHS.uk breast screening page have surged by 235% week-on-week (from 5,432 to 18,200).

For more information, contact benking@nhs.net

ACCEND Workforce Survey

If you work in the NHS and deliver cancer care, please can you complete the [ACCEND Workforce Survey](#) to help us understand the non-medical workforce supporting cancer care in England.

Who should complete it?

Nurses, allied health professionals, pharmacists, psychologists, support workers, and nursing associates providing cancer care in the NHS.

Why is it important?

1. Provides insights into the cancer workforce.
2. Identifies gaps in education, training, and career progression.
3. Supports workforce development and policy decisions.

Macmillan newsletter for February

Please see our newsletter for [February here](#).

If you have relevant support groups, topics or articles to share for the next Newsletter or would like to be added to the subscriber list please email: hilton.kavu@royalberkshire.nhs.uk

Annual flu letter 2025/26

The [tripartite annual flu letter](#) has now been published on behalf of the Department of Health and Social Care, NHS England, and the UK Health Security Agency confirming eligible groups and the vaccines to be offered.

There are no changes to the cohorts or timing for this autumn's programme.



COVID-19 spring 2025 vaccination programme

The government has accepted the **JCVI's advice** for the **spring 2025 COVID-19 vaccination programme**, recommending vaccination for:

- Adults aged **75 and over**
- Residents in **care homes for older adults**
- Individuals aged **6 months and over** who are immunosuppressed (as defined in the [COVID-19 Green Book](#))

This eligibility is the same as Spring 2024, with the addition of younger age groups. The government is reviewing JCVI's advice for the **autumn 2025** and **spring 2026** programmes and will respond soon.

Alliance updates

TYA Cancer: Working Together Engagement & Education Event

Please join us at the Apollo Hotel, Basingstoke on 20 March from 9am - 4pm.

Topics include:

- Fertility Preservation
- Aftercare & Late Effects
- Holistic TYA Care (Youth Support Workers, Activity Coordinators, Psychological Support)
- Perspectives from Designated Hospitals
- Access to Clinical Trials

Included with your ticket: Refreshments : Hot lunch : Free parking

Spaces are limited, so book now to avoid disappointment!

[Event Booking Page](#)

Training and events

NHS England Multi-professional Learner Webinar: Improving the Quality of Education and Training

Wednesday, 12 March 2025 , 5pm - 6pm

Explore how we enhance the learner experience in NHS education. Chaired by Professor Sheona MacLeod and Sam Illingworth.

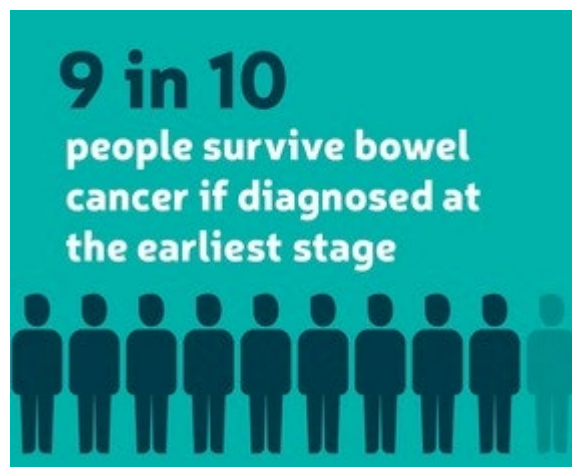
Professor Namita Kumar, Bev Harden, Kerri Elertsen-Feeney, Laura Smith, Ellie Melkuhn, and Emma Jones, who will share insights on:

- Applying the NHS education quality strategy.
- Using data to improve learner experience.
- Engaging learners in ongoing improvements.

The session includes a Q&A.

[Joining link here](#)

Bowel Cancer UK Awareness Roadshows 2025



Next month, Bowel Cancer UK, funded by the Bowelbabe Fund, kicks off its 2025 awareness roadshows, visiting 10 locations across the UK.

Featuring their inflatable bowel and trained volunteers, the roadshows provide vital information on bowel cancer symptoms and screening. Set up in high-footfall areas like supermarket car parks and high streets, they offer

easy access to quality health advice.

Bowel Cancer UK is keen to collaborate with local Cancer Alliances to share resources and support timely presentation and referral.

Healthcare professionals can also join their [Professionals Network](#).

Join the Wavelength Movement!

Frimley Academy is offering a fully funded opportunity to join the **Wavelength programme**, aimed at enhancing your professional and personal growth while

expanding your network across the Frimley Health and Care Integrated Care System (ICS). This year's programme is digital, accessible on any device, and requires both an applicant and Line Manager form to be submitted.

More info and [details on dates and sign up here](#)

Applications should be submitted by **Friday, 14 March**.

For more details contact frimley.academy@nhs.net

Lynch Project Education Event

Central and South Genomics and West Midlands Cancer Alliance are hosting the **Lynch Project Education Event** on **Wednesday, 12 March 2025**, from **10am - 3:30pm** at **Newbury Racecourse, Berkshire RG14 7PN**.

This face-to-face event will focus on the Lynch Syndrome National Transformation Project and provide updates on regional work.

To attend, please [book your ticket here](#). Feel free to share this with colleagues interested in the Lynch project.

For additional attendees, have them contact [Sarah Hewitt](#)

Patient facing resources

National Cancer CNS Day



National Cancer CNS Day on 14 March celebrates the crucial role of Cancer Clinical Nurse Specialists (CNSs), who provide expert care and emotional support to patients facing a cancer diagnosis.

NHS staff, patients, and the public are encouraged to join the social media campaign using #NationalCancerCNSDay to recognize CNS teams' dedication and highlight career pathways in cancer nursing.

More info and resources here: [National Cancer Clinical Nurse Specialist \(CNS\) Day](#)

Prostate Cancer Awareness Month



March is Prostate Cancer Awareness Month which is the most common cancer among men in the UK. This month-long campaign educates men on the importance of early detection and available treatment options.

The campaign works to break the stigma around men's health issues, focusing on risks, symptoms, and early detection. It's a time to honour survivors, remember those lost, and support those currently fighting prostate cancer.

More info here: [March the Month 2025](#)

March is Prostate Cancer Awareness Month which is the most common cancer among men in the UK. This month-long campaign educates men on the importance of early detection and available treatment options.

The campaign works to break the stigma around men's health issues, focusing on risks, symptoms, and early detection. It's a time to honour survivors, remember those lost, and support those currently fighting prostate cancer.

More info here: [March the Month 2025](#)

Ovarian Cancer Awareness Month



Currently, only 3 in 10 women diagnosed with ovarian cancer live beyond 10 years, which is unacceptable. With 7,500 women diagnosed each year in the UK, we need to make faster progress toward making ovarian cancer survivable for all women.

Ovarian Cancer Awareness Month aims to empower women, raise awareness of symptoms, and change the future for those diagnosed with ovarian cancer.

More info and materials here: [Ovarian Cancer Action Leaflets and Posters](#)

Brain Tumour Awareness Month



Better awareness of brain tumour signs and symptoms is crucial to reducing diagnosis times. However, nearly 75% of people in the UK can't name a single symptom.

Help change this by supporting Better Safe Than Tumour campaign during Brain Tumour Awareness Month. Spread the word and help raise awareness.

More info and resources: [The brain tumour charity](#)



If you have a TVCA Bulletin article you would like to share, just get in touch with us at: bobicb-bw.tvca.bulletin@nhs.net

[Manage my Preferences](#) | [Unsubscribe all updates](#)

STAY CONNECTED

WITH TVCA:



This email was sent to becks.smith@nhs.net using govDelivery Communications Cloud on behalf of: Buckinghamshire Oxfordshire & Berkshire West Integrated Care Board · Buckinghamshire, Oxfordshire, Berkshire West ICB, First Floor, Unipart House, Garsington Road, Cowley, OX4 2PG

