

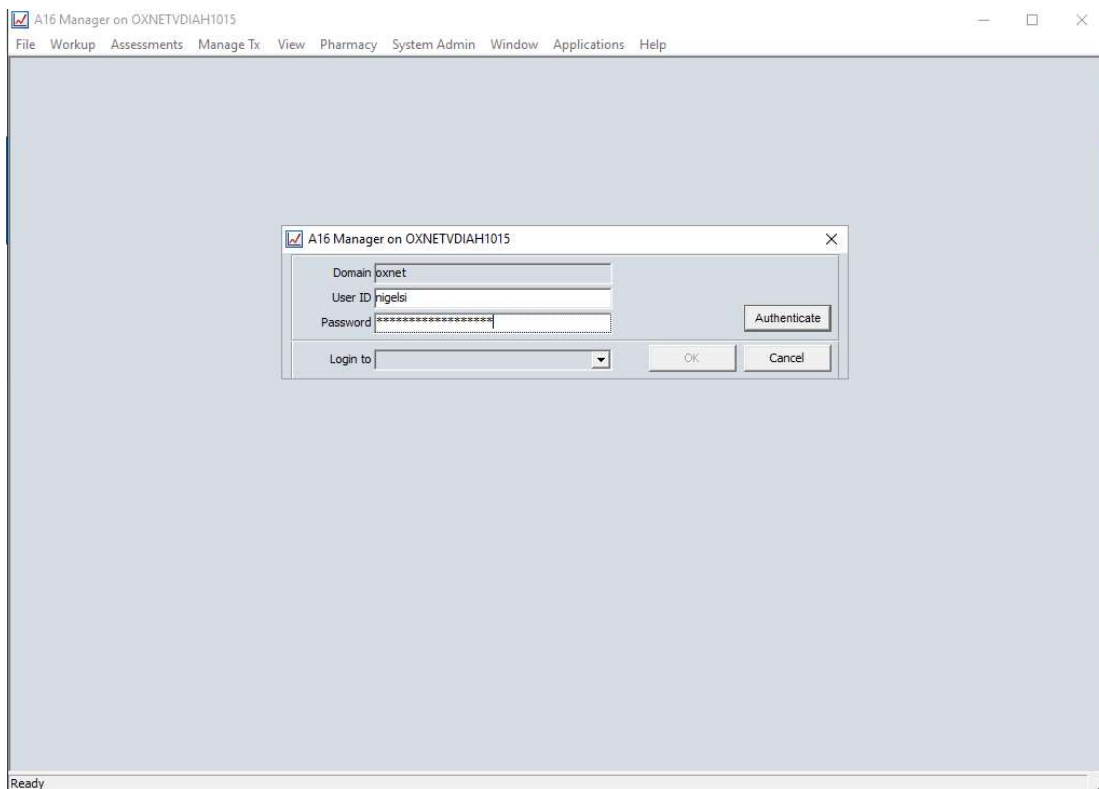
Aria Medonc v16 Logon Process

Aria Medonc v16 is now linked to your Oxnet user account and uses the same **oxnet username and password**, there is no longer a separate Aria Medonc Manager password.

1. Logon to Oxconnect (<https://oxconnect.oxnet.nhs.uk>)
2. Launch the Medonc Manager v16 application

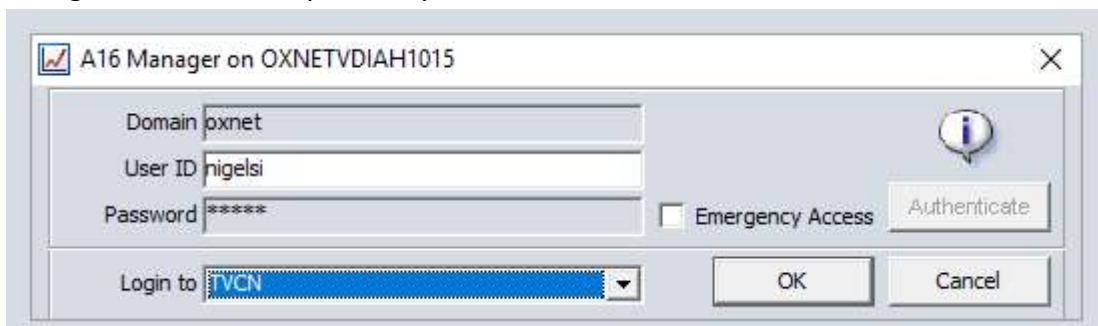


3. At the logon window, note that the Domain should be Oxnet and your User ID should be your Oxnet username

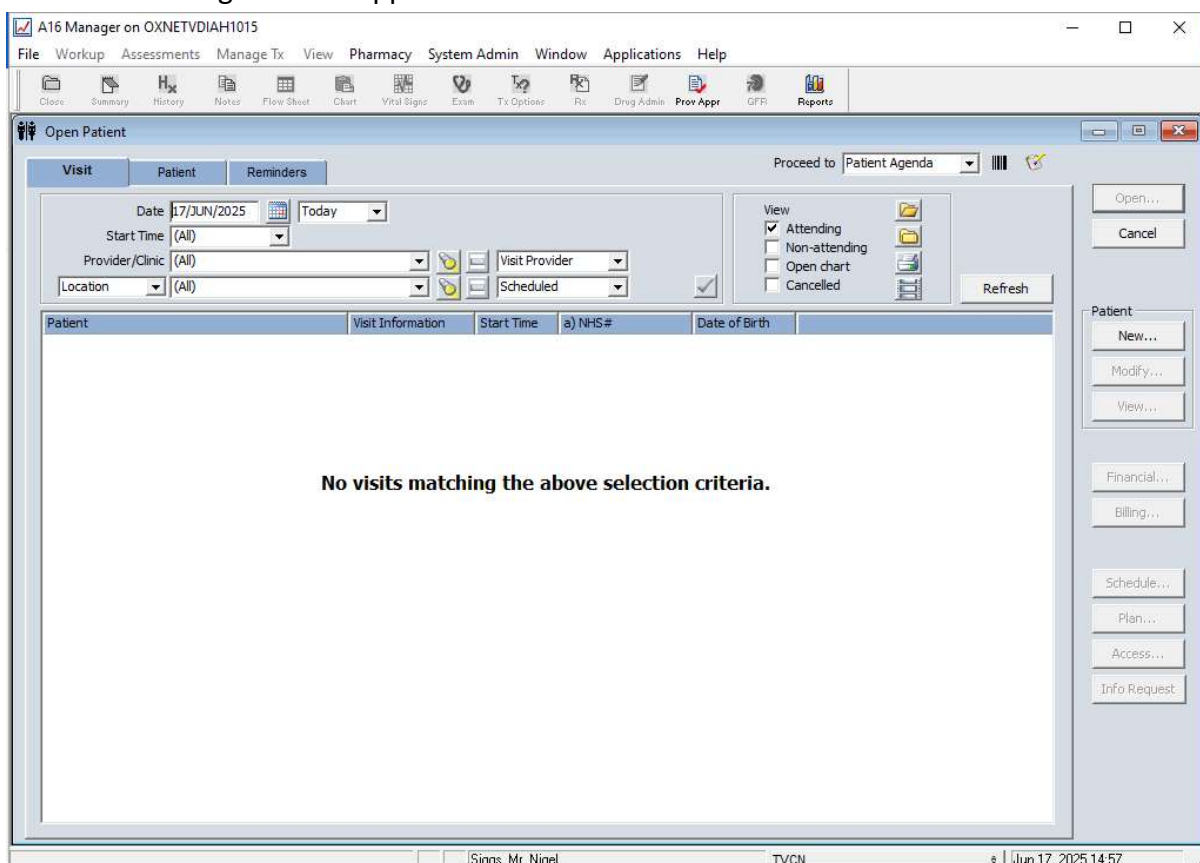


Type in your Oxnet **password** and click on Authenticate

- Once the Authenticate has taken place you will be see that the 'Login to' box become accessible, it will remember the last location you logged into or you can change it to where the patients you are interested in are scheduled



- Click on OK to log in to the application.



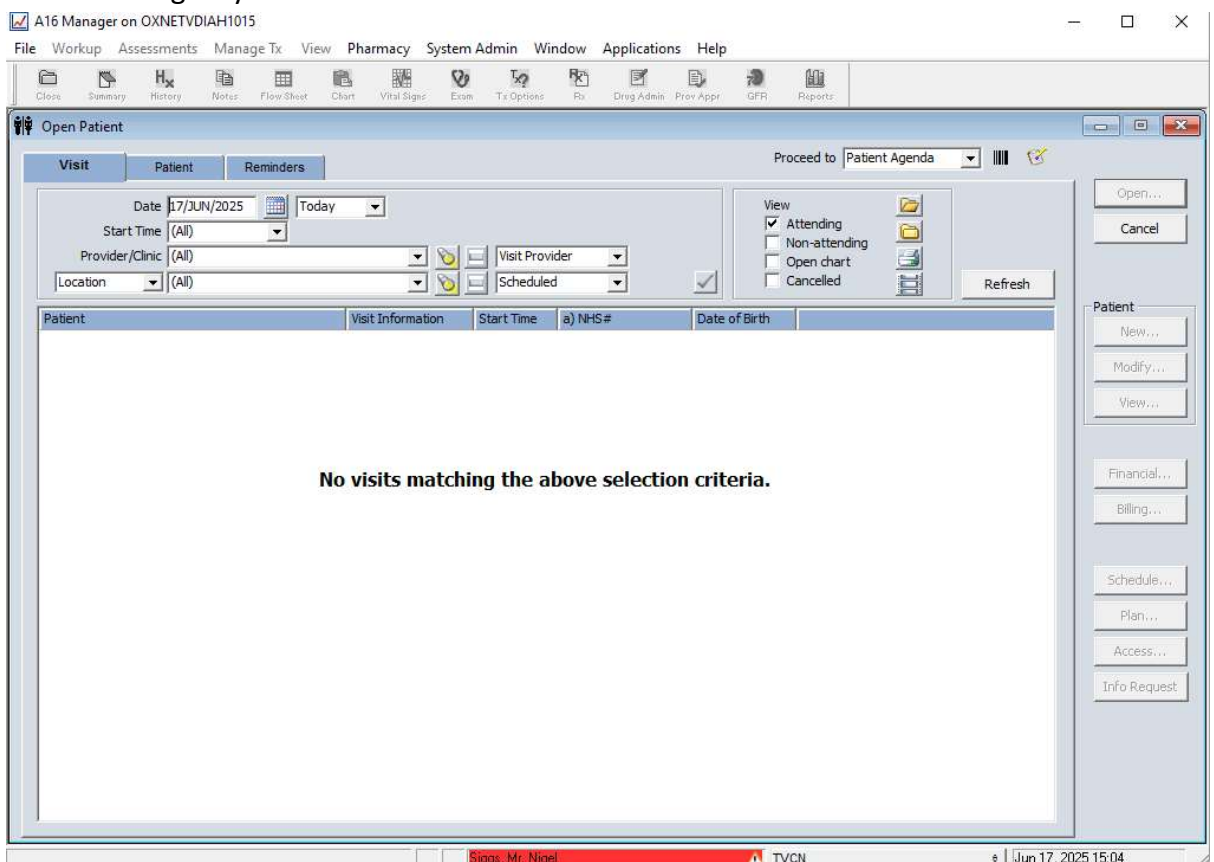
- For users that have a secondary role in the Aria system i.e. NMP prescriber access or Admin access then tick the Emergency Access button after authenticating



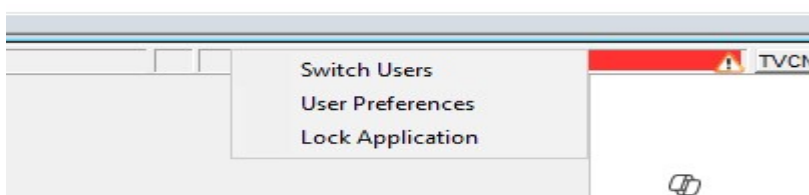
7. You will then see the below message, click Yes to continue



Note the Red warning highlight at the bottom of the screen indicating you are logged in with Emergency access.



To go back to your other Aria account click on your name at the bottom of the screen and select switch users



You will then be returned to the logon screen



No visits matching the above selection criteria