



# Thames Valley Cancer Alliance

## Issue 126: 13 November 2025

- [National news](#)
- [Training and events](#)
- [Patient facing resources](#)

### Update: Moving to a Monthly Bulletin

From **1 January 2026**, we'll be moving from a **biweekly** to a **monthly stakeholder bulletin**. This change will allow us to provide comprehensive, high-quality updates while making the best use of our communications resources.

You can continue to find the latest news, events, and announcements at any time on our website: [News and Events](#).

We'll also continue to share any urgent or time-critical information via this channel to ensure stakeholders remain informed between editions.

---

### National news

#### Medium Term Planning Framework

The **Medium Term Planning Framework** sets out NHS operational priorities for the next three years, including the ambition to meet **Cancer Waiting Times Standards by March 2029**.

It highlights continued focus on early diagnosis, diagnostic and treatment capacity, and the key role of **Cancer Alliances** in driving improvement.

Organisations must submit three-year plans before Christmas, with full plans due in early February.

**Read more:** [Medium Term Planning Framework \(NHS England\)](#)

## **Planned Industrial Action – British Medical Association (BMA)**

The **British Medical Association (BMA)** has confirmed that **Resident Doctors** will take industrial action from **7am Friday 14 November to 7am Tuesday 19 November**.

Trusts and ICBs have received a [letter from Jim Mackey](#) outlining planning and preparation requirements ahead of the action.

An additional [letter from Mike Prentice](#) provides further guidance on patient safety mitigation, data reporting requirements, management of training and deployment, and recovery arrangements following the action.

Please ensure relevant teams are aware and continue local planning in line with national guidance.

## **NHS Resolution: Delayed Cancer Diagnosis in General Practice**

**NHS Resolution** has published a new thematic review, *Delayed Diagnosis of Cancer: A Thematic Review of General Practice Indemnity Claims*.

The report analyses 105 completed claims over seven years to identify key learning points and drive improvements in patient safety across general practice.

Findings highlight three priority areas for action:

- **Optimising diagnostic processes** to reduce delays
- **Enhancing communication** within consultations and across care settings
- **Empowering patients** through improved self-referral and escalation routes

The review offers practical insights to support clinicians in reducing diagnostic delays and improving cancer outcomes.

**Read the full report: [Delayed diagnosis of cancer: a thematic review of general practice indemnity claims - NHS Resolution](#)**

## **NHS Issues Flu Jab SOS – Protect Yourself Before Winter**

With the worst of winter only weeks away, the **NHS is urging all eligible adults to get their flu vaccination now** to ensure protection ahead of the seasonal peak.

Read full article here: [NHS issues flu jab SOS with worst of winter only weeks away](#)

For people **undergoing cancer treatment, recovering from treatment, or with weakened immune systems**, the flu jab is strongly recommended. These groups are at higher risk of serious illness and complications from flu.

Most cancer patients and those who are immunosuppressed are eligible for a **free NHS flu vaccine** through their GP, hospital team, or local pharmacy.

Find out more or book flu jab here: [www.nhs.uk/flu vaccine](http://www.nhs.uk/flu vaccine)

### **NHS Jewish BRCA Testing Programme**

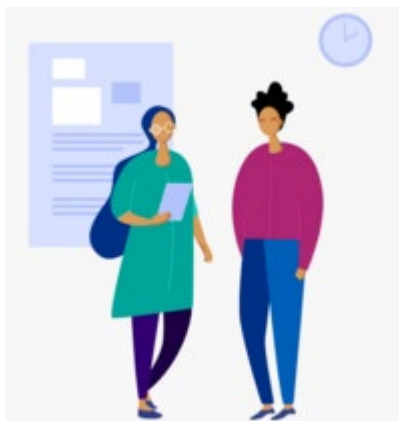
Registrations for NHS England's **Jewish BRCA Testing Programme** closed on **31 October**, following a highly successful three-year pilot with over **43,000 participants**.

The **NHS Cancer Programme** and **NHSE Genomics Programme** are now developing new arrangements for ongoing testing, expected to launch in **2026**.

From **1 November**, individuals of Jewish ancestry can submit an **expression of interest** to be notified when registration reopens.

For further information contact [susana.lukic@nhs.net](mailto:susana.lukic@nhs.net)

### **National Cancer Patient Experience Survey 2025**



The **2025 National Cancer Patient Experience Survey (NCPES)** will be issued from **10 November 2025 to 30 January 2026**. Eligible participants include adults with a confirmed primary cancer diagnosis who received inpatient or day case treatment between **April and June 2025**.

An updated [communications toolkit](#) with key messages, posters, social media content, and videos is available on the **NCPES website** to help promote

the survey.

Please support awareness efforts to encourage strong participation when invitations are sent.

For queries, contact [cpes@pickereurope.ac.uk](mailto:cpes@pickereurope.ac.uk).

### **Under 16 Cancer Patient Experience Survey (U16 CPES) 2024 Results**

The **U16 Cancer Patient Experience Survey 2024 results** were published on **6 November** and are now live on the survey website.

This fifth national survey measures the experiences of children receiving NHS cancer and tumour care in England. Available outputs include national and PTC-level reports, data tables, an online dashboard, and visual summaries.

A **results webinar** hosted by **NHS England** will take place on **Wednesday 26 November, 9:30–11:00** via Microsoft Teams. [Click here for details and to register](#)

For queries, contact [england.insight-queries@nhs.net](mailto:england.insight-queries@nhs.net)

### **New Lung Cancer Trial Added to the Cancer Vaccine Launch Pad**

The **Cancer Vaccine Launch Pad (CVLP)** is expanding to include the **BNT327-06 immunotherapy trial (ROSETTA Lung-02)** for treatment-naïve patients with advanced non-small cell lung cancer (NSCLC).

CVLP sites will begin screening eligible patients, with the first site expected to open by **January 2026**.

This update is shared for information, and the CVLP team will contact relevant **Cancer Alliances** directly where needed.

For further information, contact [molly.obadiah1@nhs.net](mailto:molly.obadiah1@nhs.net).

### **Advert Live: Multi-Cancer Detection (MCD) Test Trial**

Funding is now available through the **Office for Life Sciences** for an NIHR-led trial assessing the clinical and cost effectiveness of using multi-cancer detection (MCD) tests in primary care to triage patients with non-specific abdominal symptoms for urgent cancer investigation.

A **virtual workshop** will be held on **Friday 21 November 2025**. Registration closes **Tuesday 18 November 2025**.

To register, email [HTAfunding@nihr.ac.uk](mailto:HTAfunding@nihr.ac.uk) confirming existing relationships with blood-based MCD manufacturers and readiness to submit a full application within eight weeks of the workshop.

Further details are available on the [NIHR website](#).

### **Macmillan Prehabilitation in Cancer: Clinical and Implementation Guidelines**

The updated *Prehabilitation in Cancer: Clinical and Implementation Guidelines* are now live on the **Macmillan Cancer Support** website. Co-chaired by Macmillan and the **NIHR Southampton Biomedical Research Centre**, with input from **NHS England, CPOC, WCRF**, and others, the guidelines provide **evidence-based recommendations** for designing and delivering effective prehabilitation in cancer care.

They cover implementation, health economics, behaviour change, nutrition, psychological support, and exercise—helping ensure equitable access and outcomes for all patients.

[Access the guidelines here](#)

---

## Training and events

### Dietetic Management and Pancreatic Cancer

Pancreatic Cancer UK invites health professionals to its **free annual educational webinar** on dietetic management in pancreatic cancer. Expert dietitians will explore nutritional assessment and management, with a focused session on **pancreatic exocrine insufficiency (PEI)** and the use of **pancreatic enzyme replacement therapy (PERT)**.

**Date: Wednesday 3 December 2025**

[Register here](#)

For more information, contact [hpnetwork@pancreaticcancer.org.uk](mailto:hpnetwork@pancreaticcancer.org.uk)

### Retrospective Genetic Testing Programme: For relevant secondary care teams.

The **NHS Cancer Programme** has launched the full rollout of the **Retrospective Genetic Testing Programme** following a successful pilot. The programme offers **R207/R208 gene panel screening** for eligible patients with inherited breast and ovarian cancer.

A summary of the pilot findings, full rollout details, and modelling for downstream service impact are available here: [Futures](#)

For queries, contact [susana.lukic@nhs.net](mailto:susana.lukic@nhs.net)

### Online Discussion for Cancer Caregivers

27 November 2025, 5.30 - 7pm (online)

**Wessex** and **South East London Cancer Alliances** are hosting an online discussion for anyone caring for or supporting someone with cancer.

The session will explore:

- What worked well in the information and support you received
- What didn't work so well

- What would have made the biggest difference

Insights will be shared with the **National Cancer Programme** and Cancer Alliances across England.

**To attend:** email [sue.newell@wca.uhs.nhs.uk](mailto:sue.newell@wca.uhs.nhs.uk)

If you can't join live, you can still share your views via the same email.

Please share across your networks.

### **Navigating Cancer, Fertility & Sexual Wellness**

Join the **Thames Valley & Wessex Teenage and Young Adult Cancer ODN Education Event** on **4 March 2026** at the Apollo Hotel, Basingstoke.

This full-day MDT event will cover fertility preservation, sexual health, and aftercare support for cancer patients, with expert speakers and patient perspectives.

**View the flyer for details and registration:** [Navigating Cancer, Fertility & Sexual Wellness \(PDF\)](#)

### **Chronic Pain as a Cancer Late Effect – Awareness Event**

The **Pain-Related Complex Cancer Late Effects Rehabilitation Service (CCLERS)** at **Royal United Hospitals Bath NHS Foundation Trust** is hosting an in-person event exploring the long-term effects of cancer treatment, including chronic pain and its wider impact on patients' lives.

**Friday 20 March 2026, 8am - 4 pm**

The session will raise cover the challenges faced by people living with persistent pain, fatigue, cognitive changes (“brain fog”), and psychological distress after cancer and be of particular interest to clinicians working in **cancer care, pain management, rehabilitation, primary care, and mental health**.

View more info and details on booking here: [Chronic Pain as a Cancer Late Effect](#)

### **World Antimicrobial Resistance (AMR) Awareness Week: 18–24 November**

Antimicrobial resistance (AMR) is a serious and growing threat, making infections harder—or sometimes impossible—to treat. In the UK, AMR is linked to twice as many deaths each year as breast cancer.

This year's **World AMR Awareness Week** highlights the urgent need for responsible antibiotic use across all healthcare settings.

Join the **free, expert-led webinars** to strengthen your understanding of AMR, explore best practice in antimicrobial stewardship, and gain practical tools to support safer prescribing and patient care.

Together we can protect patients, preserve antibiotics, and help slow resistance.

Find out more and register here: [Sign up to our webinars for World AMR Awareness Week 2025](#)

---

## Patient facing resources

### Cancer Awareness Campaigns – November 2025



November is one of the busiest months in the cancer awareness calendar, with several national and global campaigns focused on raising awareness, improving early diagnosis, and supporting those affected by cancer.

Throughout the month, we encourage colleagues across the system to share key messages from their own or TVCAs social channels, display campaign materials, and signpost patients and the public to reliable sources of information and support.

- **1–30 November – Lung Cancer Awareness Month:** A national campaign highlighting the signs and symptoms of lung cancer and promoting early diagnosis, including in non-smoker: [This is Lung Cancer - roycastle.org](https://www.roycastle.org)
  - **1–30 November – Pancreatic Cancer Awareness Month:** Focused on the “silent” nature of pancreatic cancer, this campaign raises awareness of its subtle symptoms and the importance of early detection: [Pancreatic Cancer UK](https://www.pancreaticcanceruk.org)
  - **1–30 November – Mouth Cancer Awareness Month:** Promotes awareness of mouth and oral cancers, their risk factors, and early signs such as ulcers or lumps that don’t heal: [Mouth cancer - NHS](https://www.nhs.uk/health-topics/mouth-cancer)
  - **1–30 November – Movember:** A global movement highlighting men’s health issues including prostate and testicular cancers, and encouraging men to seek help early: [Movember | Changing the face of men's health](https://www.movember.com)
  - **1–30 November – Gastric Cancer Awareness Month:** Dedicated to raising awareness of stomach (gastric) cancer, its risk factors, and the importance of early detection: [Pancreatic Cancer UK](https://www.pancreaticcanceruk.org)
  - **19 November – International Men’s Day:** Encourages men to engage with their health and wellbeing, including awareness of male cancers: [Welcome to the home of International Men's Day in the UK](https://www.internationalmensday.org)
  - **20 November – World Pancreatic Cancer Day:** A global event highlighting the urgent need for earlier diagnosis and better outcomes in pancreatic cancer: [Pancreatic Cancer UK](https://www.pancreaticcanceruk.org)
- 

**Like and follow us on our social media channels:**

[FaceBook](#)

[BlueSky](#)

[Instagram](#)

[LinkedIn](#)

[Nextdoor](#)

[YouTube](#)



Thames Valley  
Cancer Alliance

